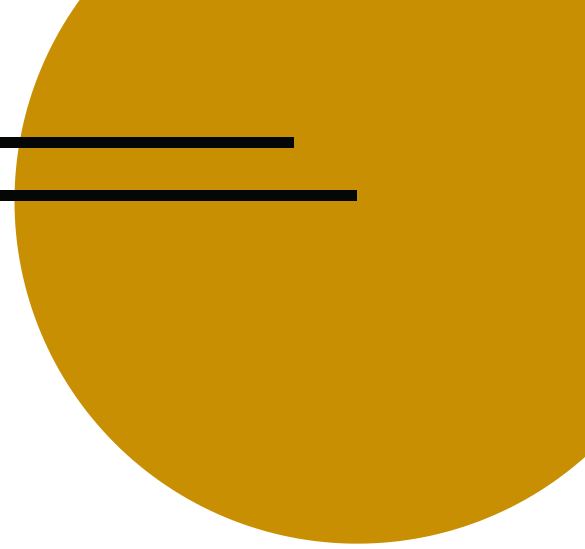
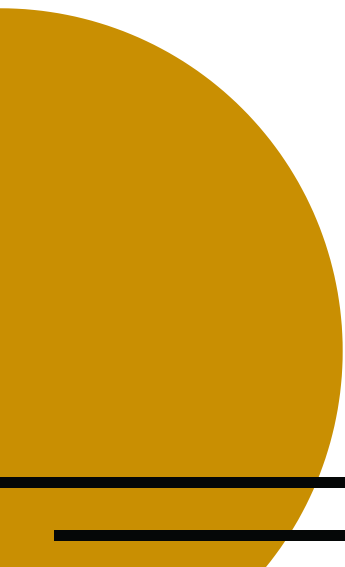
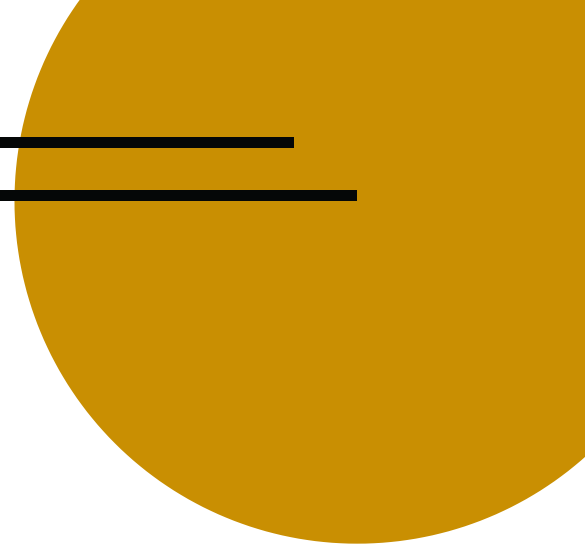


*Ren*

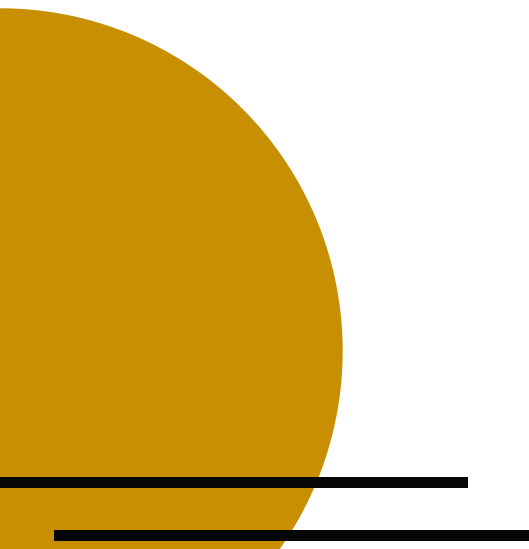
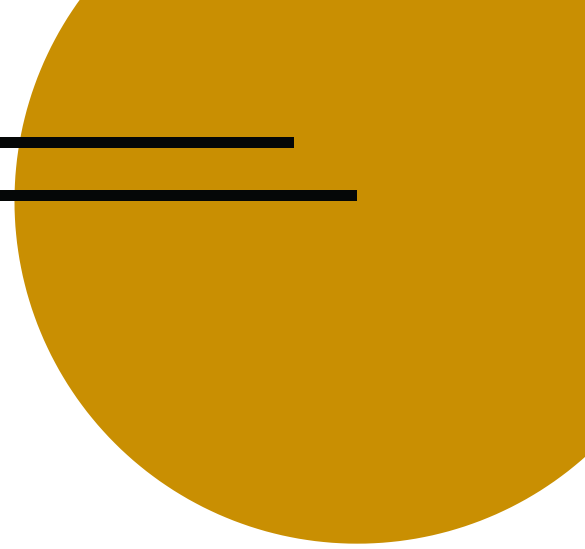
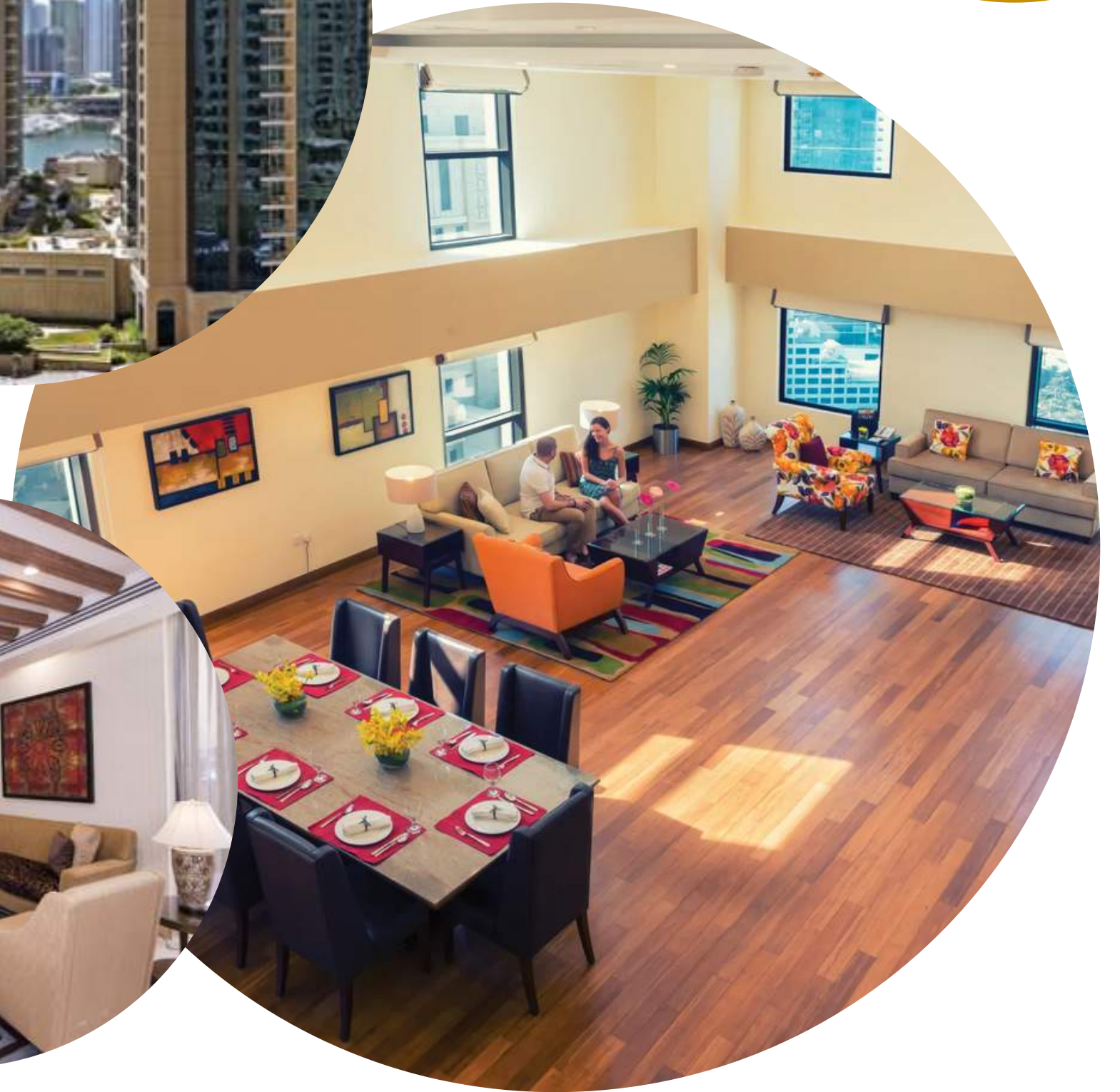
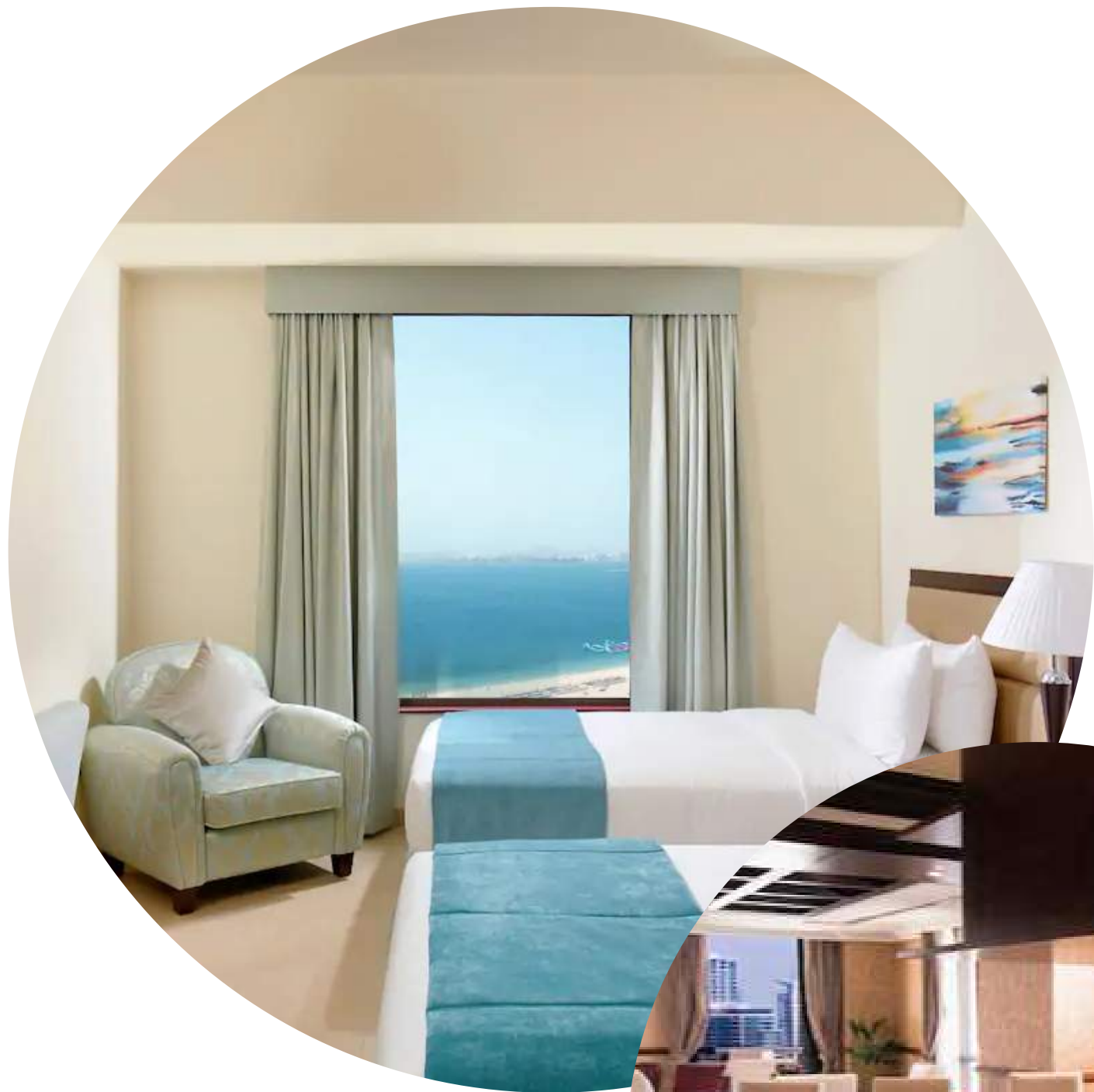
**REN iDESIGNBUILD**  
ELEVATING INTERIORS TO A HIGHER LEVEL











# What do we do?

Interior Design  
Turnkey Interior Contracting  
FF&E + OS&E Procurement  
Finishing Touches  
Design & Build



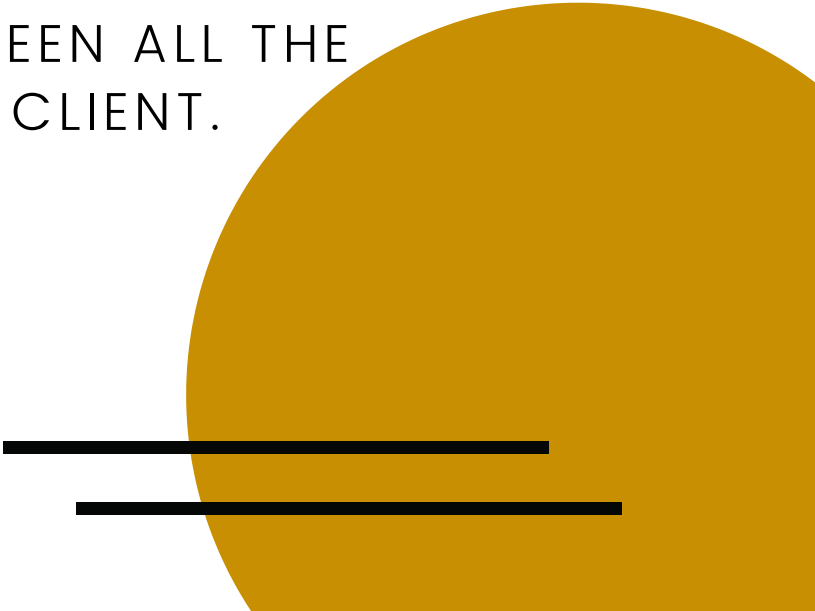


# MISSION

OUR MISSION IS TO SHAPE SPACES WITH  
“**TIMELESS DESIGNS**” AND TO BE  
CONTINUOUSLY RECOGNIZED AS A  
**PROFESSIONAL** INTERIOR DESIGN & BUILD  
COMPANY, PROVIDING SOLUTIONS IN THE  
FIELD OF **HOSPITALITY, CORPORATE,**  
**COMMERCIAL & RESIDENTIAL INTERIORS.**

# VISION

OUR **VISION** IS TO **CHANGE THE MINDSET**  
TOWARDS OUR INDUSTRY AND TO  
REMAKE IT INTO A PROFESSION THAT IS  
RESPECTED FOR ITS **INTEGRITY**  
**HONESTY, PROFESSIONALISM,** AND  
**CLIENT-FRIENDLY ATTITUDES.** TO FOCUS  
ON DIFFERENTIATING INTERIOR DESIGN &  
BUILD FROM ARCHITECTURE AND  
CONTRACTING, MAKING IT RECOGNIZED  
AS AN **INTEGRAL AND VITAL** PART OF  
ANY PROJECT WITH A HIGH CALIBER OF  
COORDINATION BETWEEN ALL THE  
TRADES AND THE CLIENT.





# Why Us?



## **Potential Cost Savings:**

Ren has the potential to reduce overall project cost



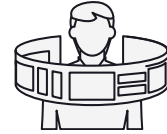
## **Earlier Project Completion:**

Working with Ren will result in earlier completion of the project because there is no dead time between completion of design and start of construction



## **Reduced Claims Exposure:**

Ren eliminates the liability gap



## **New Technologies:**

Ren endeavors to select the latest and most cost-effective materials



## **Over-All Project Optimization:**

Design-bid-build can suffer from sub-optimization when individual project participants optimize their own positions



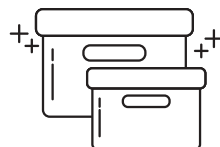
## **Reduced Administrative Burden :**

Working with Ren may reduce the administrative burden for our clients



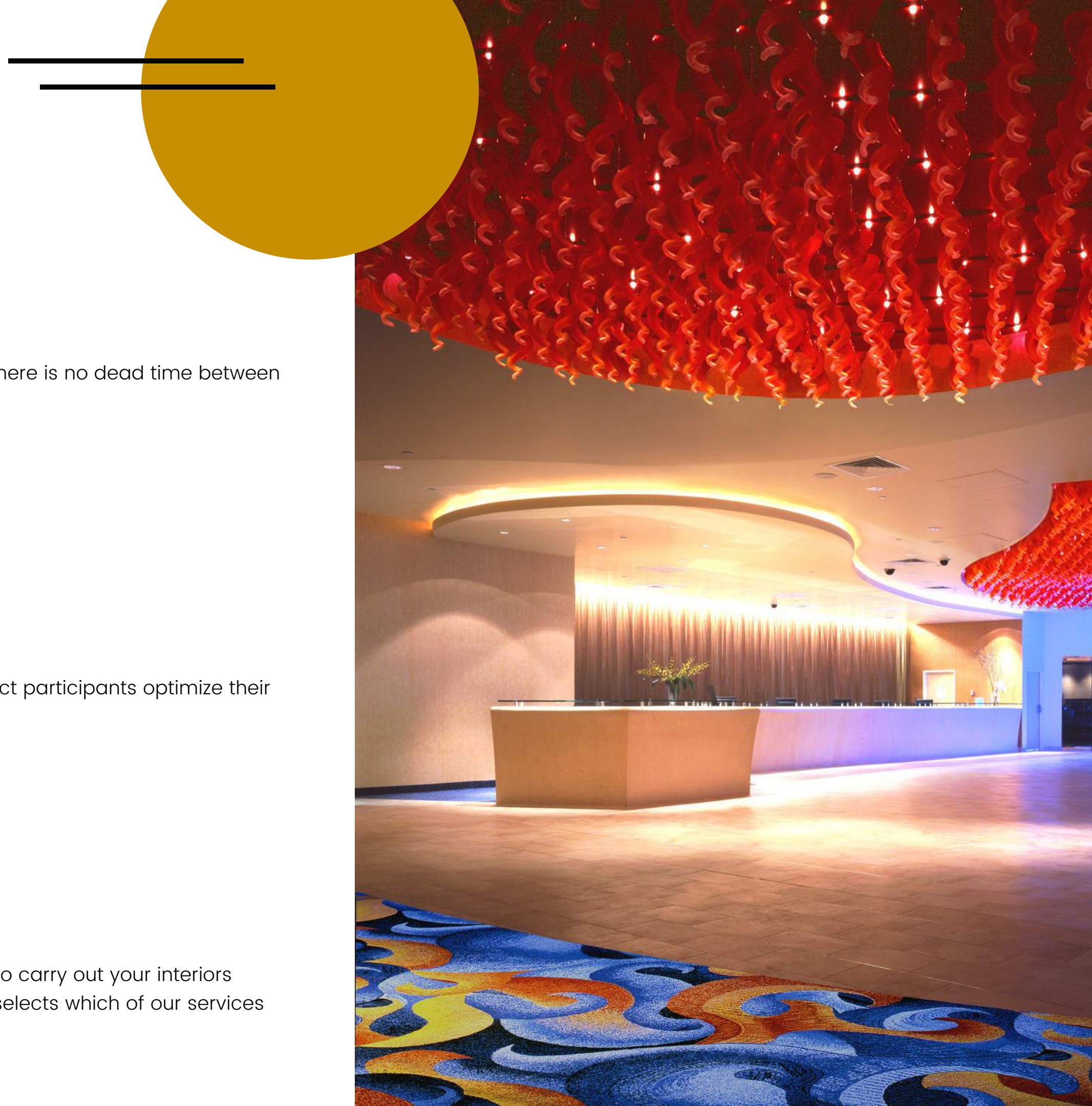
## **Earlier Cost Visibility:**

The total cost of the is apparent earlier with Ren



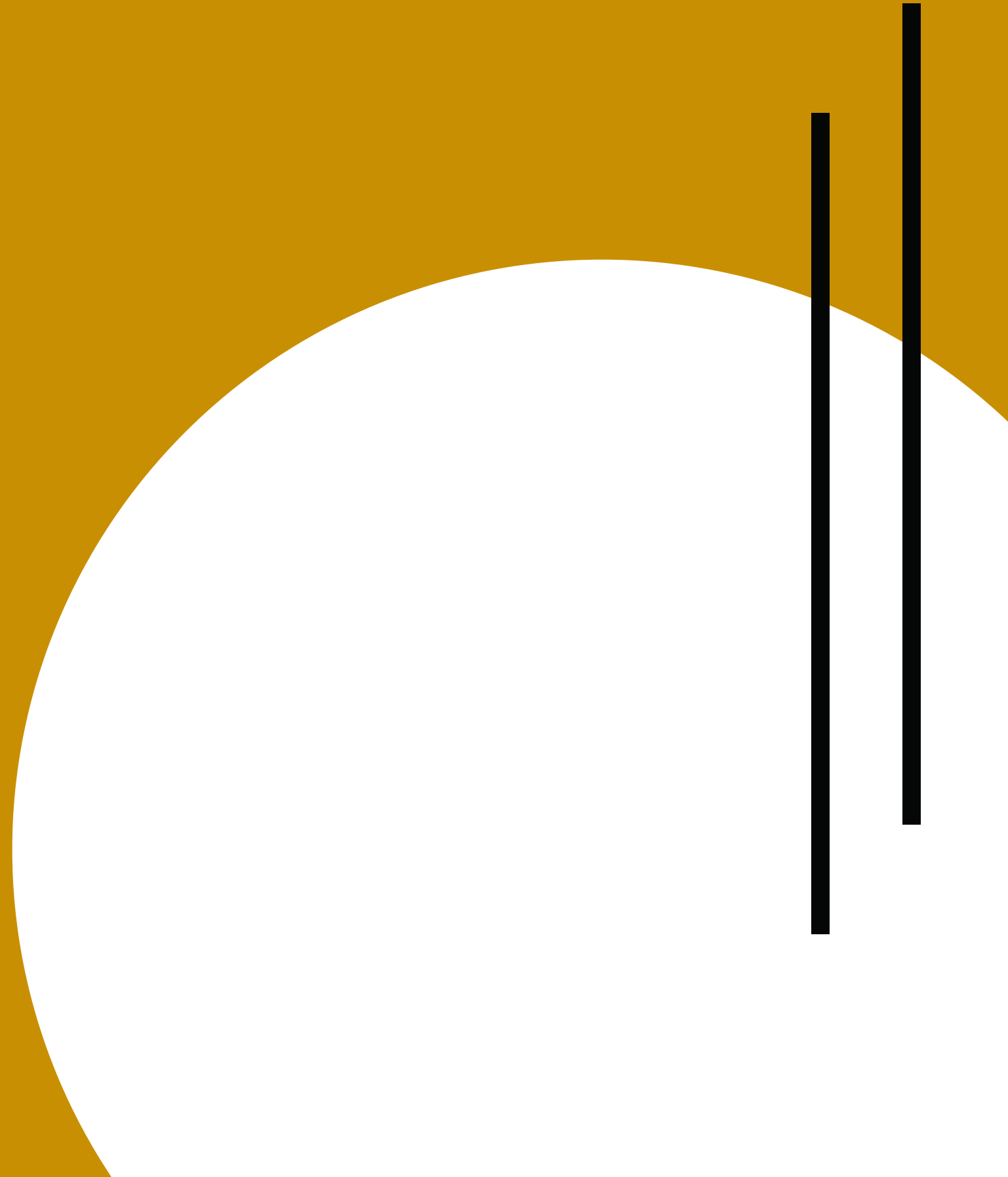
## **Freedom to Compartmentalize our Services:**

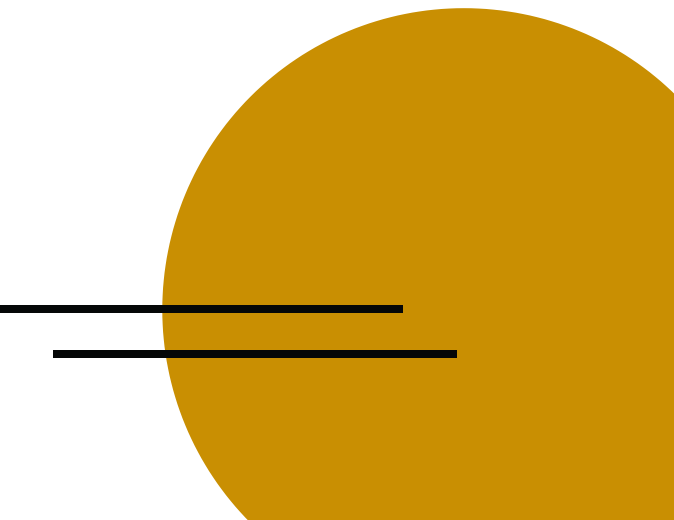
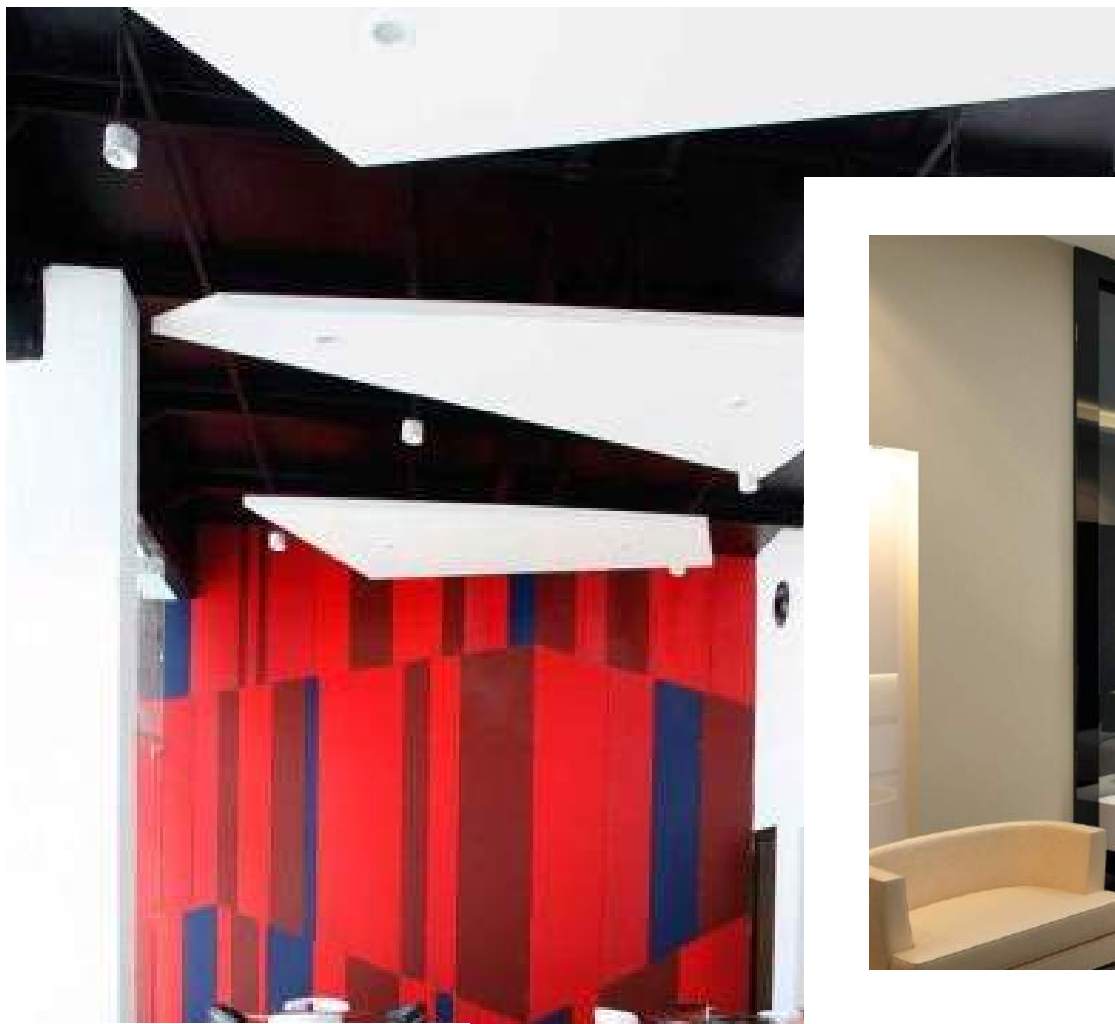
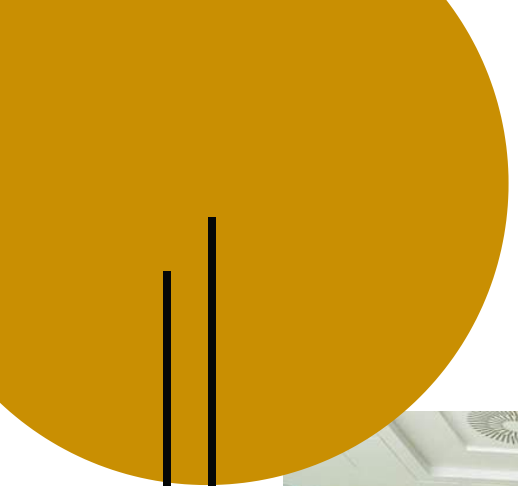
Though we consider that the Design-Build model is the optimal method to carry out your interiors projects, we realize that in some instances this is not feasible. Our client selects which of our services you require.



# Interior Design

WE BREAK THE MOULD



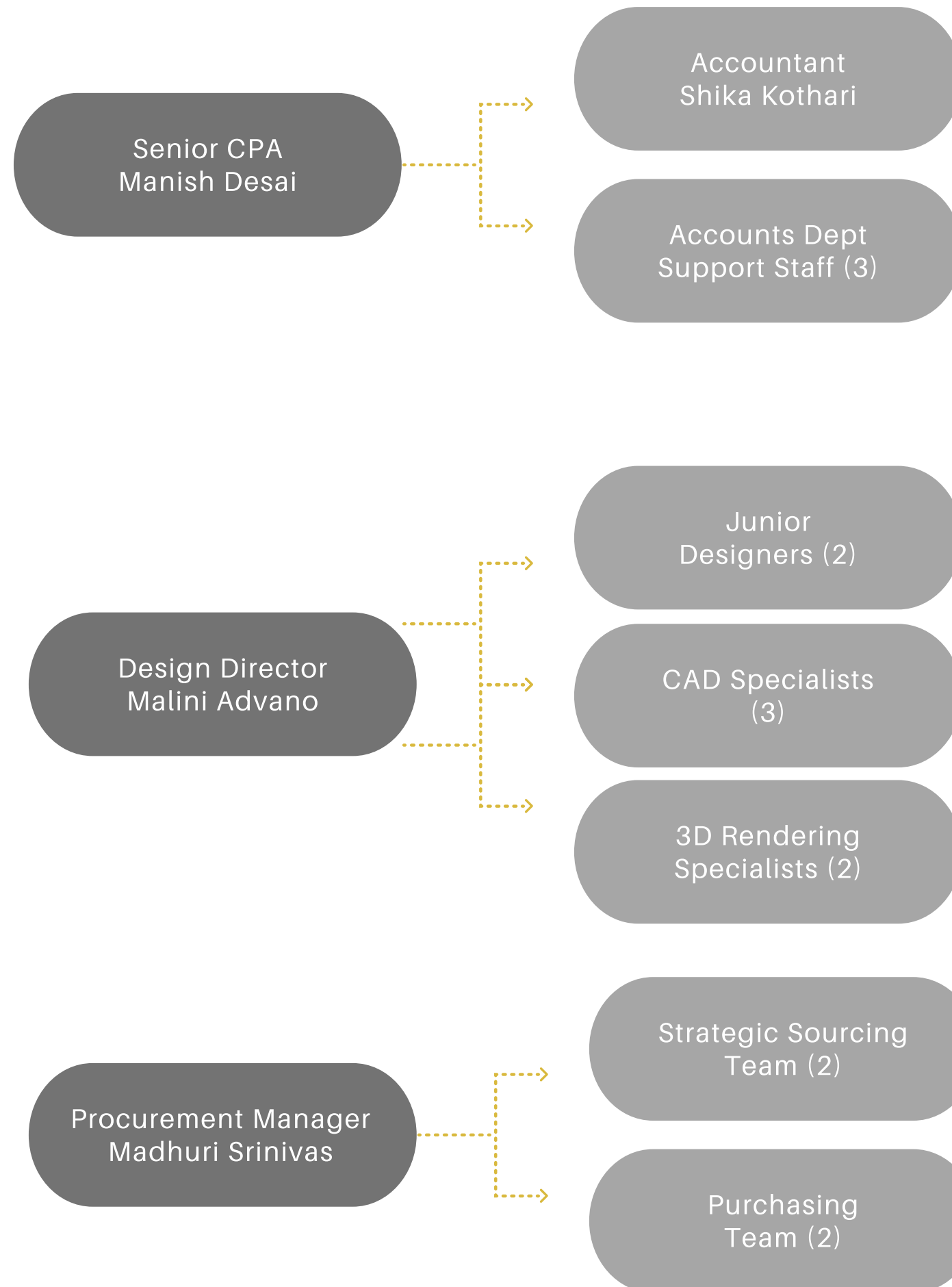


# INTERIOR DESIGN

## Organizational Chart

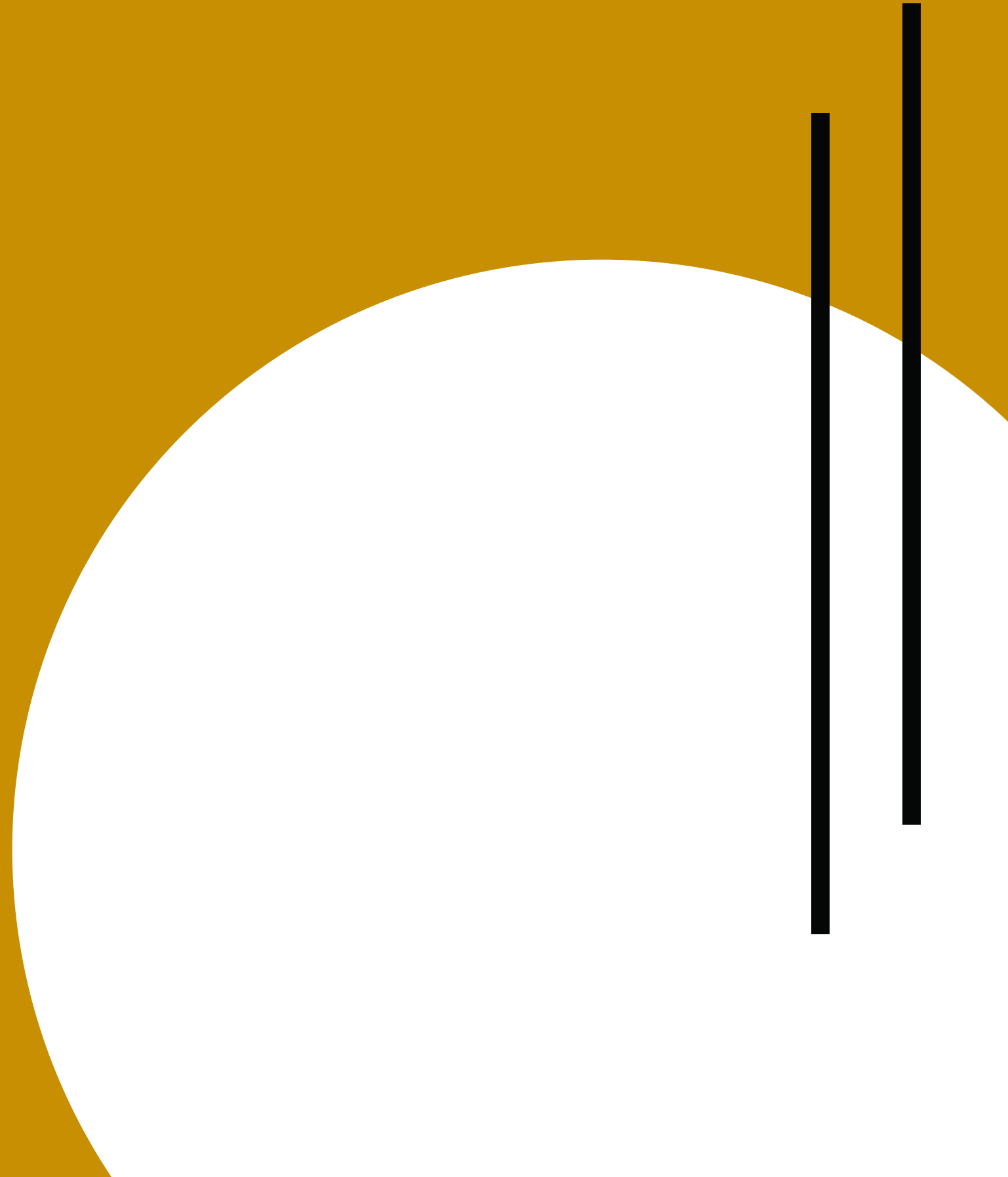


CMD  
RICK ADVANO



# Turnkey Interior Contracting

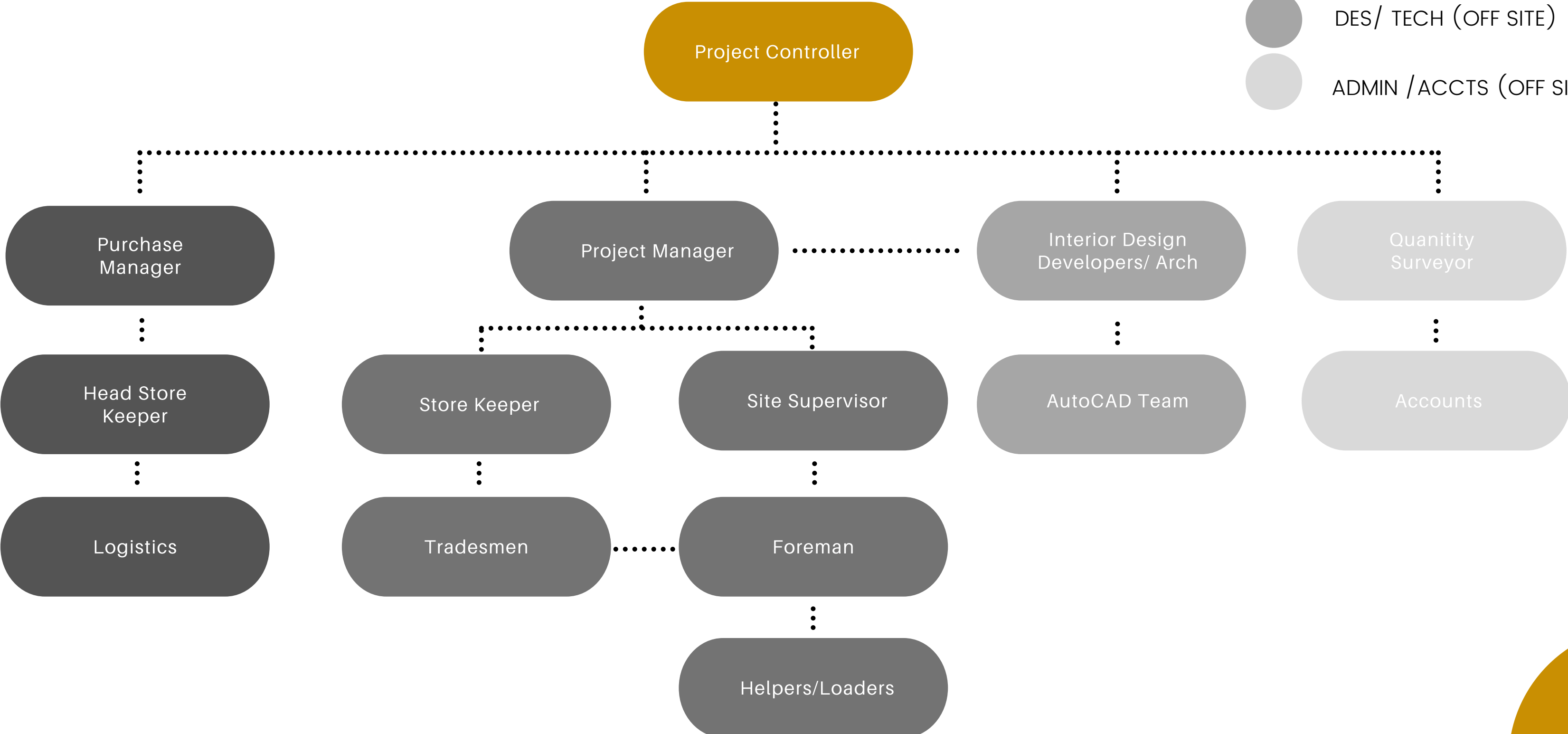
EVERYTHING DONE RIGHT UNDER  
ONE ROOF





# INTERIOR CONTRACTING CONTROL FLOW CHART WITH DESIGNATIONS

- SNR MGMT (ON/OFF SITE)
- OPERATIONS (OFF SITE)
- ON SITE PERSONNEL
- DES/ TECH (OFF SITE)
- ADMIN /ACCTS (OFF SITE)





## CIVIL WORKS

- Civil Finishes (Masonry/Tile/ Marble/ Stone)
- Stone and Marble Wall Cladding Exterior/Interior
- Hard, Soft & Resilient Flooring Supply and Installation
- Final Fix Electrical/ Plumbing/Sanitary/Accessories
- Fixed & Loose case goods manufacturing & Installation (Joinery)
- Soft Furnishings manufacturing & installation
- Window Treatments manufacturing & installation
- Fire Rated Main Room/ Bathroom/Utility Doors
- Specialty Exterior Facades- Fabrication & Installation
- Deco Ceiling works- Fabricate & Installation





# FIT OUT SEGMENTS

- Shopping Centre's and Malls
- 3-, 4- & 5-Star Hospitality
- Corporate Office Interiors
- Sales Offices and Club Houses
- Immersion Experience Centre's
- Residential Interiors
- Retail Establishments
- Restaurants/ Cafes
- Furnished/ Unfurnished Flats
- Show Villa's & Flats
- Public Areas
- Banks
- Aviation
- Specialty Projects



# IDENTIFIABLE INTERIOR CONTRACTING CRITICAL MILESTONES



**ADMINISTRATIVE AND  
FUNDING APPROVALS**



**SITE HANDOVER FOR  
STARTING WORK AT SITE**



**FINAL DEMARCATION OF  
AREAS AND DETAILS**



**FREE ISSUE MATERIALS  
DELIVERY TIMELINES**



**PROJECT MOBILIZATION**



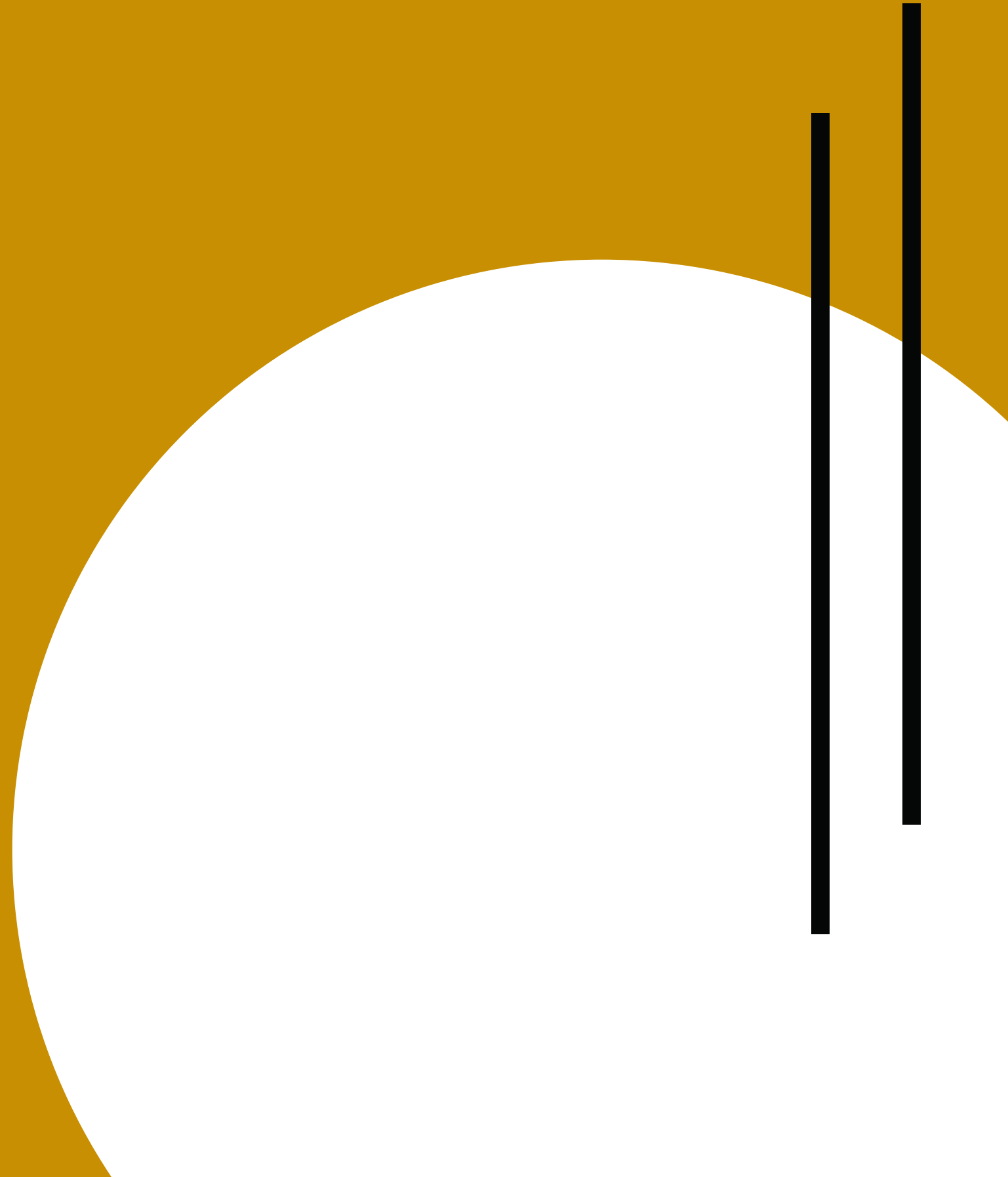
**SUBSTANTIAL COMPLETION  
COMMISSIONING, START-UP,  
AND TURNOVER**



**PROJECT COMPLETION**

# FFE + OS&E PROCUREMENT

SOURCING AND DELIVERING THE  
UNEXPECTED



## WE SHRINK THE ENTIRE FF&E PROCUREMENT PROCESS INTO A STREAMLINED ACTIVITY WITH ACCOUNTABILITY.

Deciding on the **perfect furniture and accessories** is hard enough.

But, when you are **sourcing** furniture, accessories, fixtures, and technology for an entire office, show flat, furnished apartment, hotel, or building lobby, things can quickly get overwhelming. We make sure **you get what your project needs** and that it gets the best and most aesthetically appropriate innovative and exciting products.

What's even better is that we **juggle** all the different orders, payment, and delivery schedules.

Our goal is to **relieve the pain that comes with purchasing**. Through an **integrated FF&E Procurement solution**, we consolidate the entire process into a **single point-of-contact** and accountability. We

regularly capitalize on our strengths as an **Interior Design and Build**

**Firm** to get the very best results. From specifications to vendor solicitations, purchase orders to subcontracts, our dedicated team of procurement experts, make sure you get everything you need for your interior project **no matter the size and scope**. We have the **expertise, relationships**, and drive to ensure you will always receive the best value for your budget.

## DETAILED SERVICES

- REQUIREMENTS GATHERING
- EXISTING FURNITURE INVENTORY
  - NEEDS ASSESSMENT
- OPTIONS DEVELOPMENT AND ANALYSIS
- DELIVERY MODELS / PURCHASING OPTIONS
  - BUDGET AND SCHEDULE DEVELOPMENT
- RFP DEVELOPMENT PROCUREMENT AND BID LEVELING
  - VALUE ENGINEERING
- CONTRACT REVIEW AND NEGOTIATIONS
- FINAL PRODUCT SELECTIONS AND SUBMITTALS
- PRE-INSTALLATION COORDINATION AND MANAGEMENT
- INSTALLATION OVERSIGHT AND COORDINATION
  - PUNCHLIST MANAGEMENT
  - PROJECT CLOSE-OUT





[matrix]

1

PROJECT  
KICKOFF

2

BUDGET  
DEVELOPMENT

3

IDENTIFYING  
THE LOOK

4

SOURCING

5

MATRIX OF  
ALTERNATIVES

6

ORDER  
PLACEMENT



7

ACCOUNTING &  
CASH CONTROL



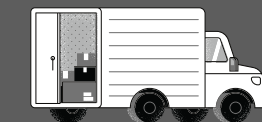
8

MONITORING  
THE BUDGET



9

EXPEDITING &  
LOGISTICS TO  
SITE



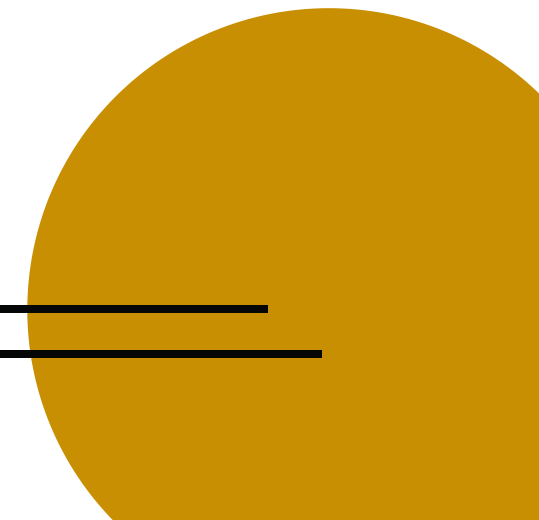
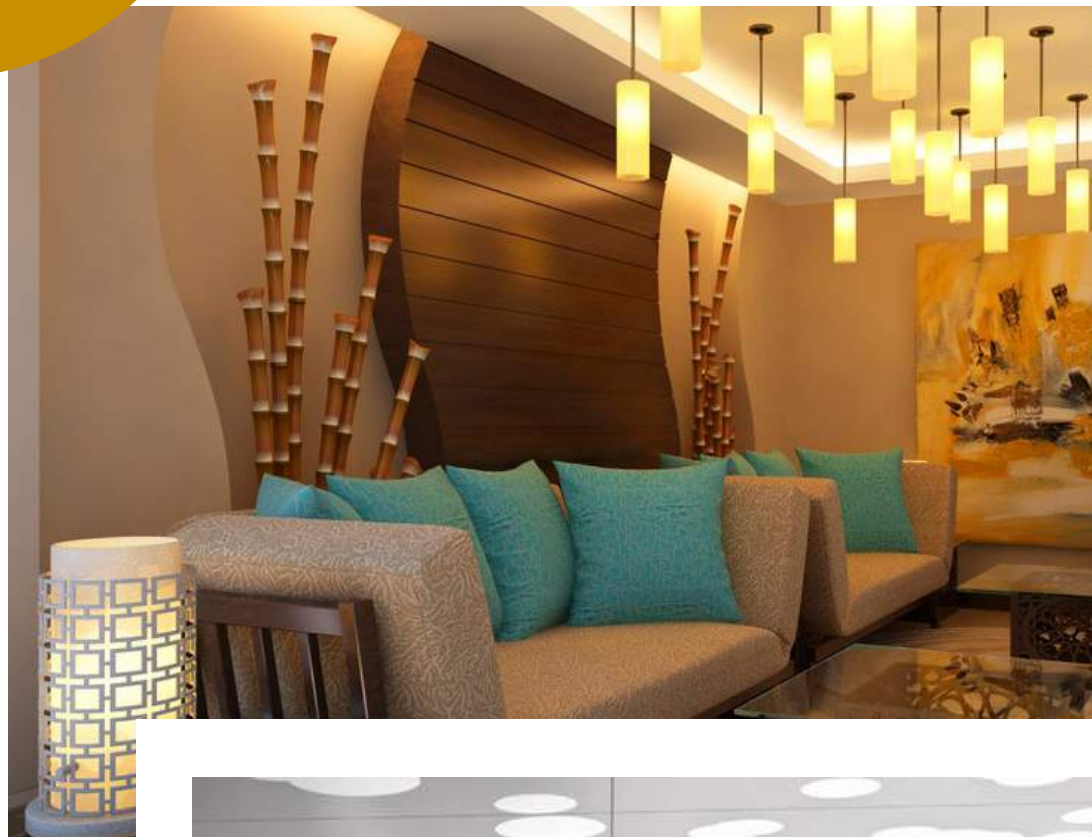
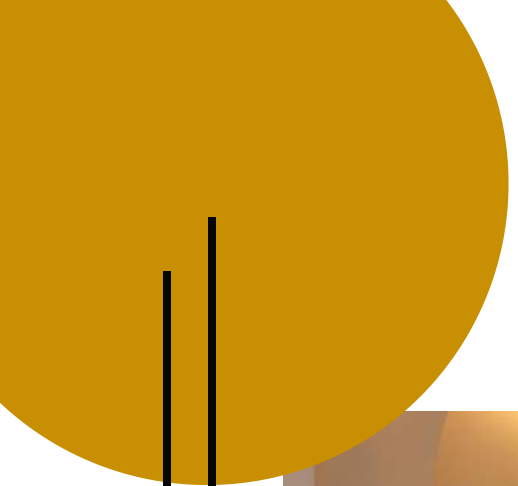
10

RECEIVING &  
INSTALATION



# FF&E PROCUREMENT PROCESS

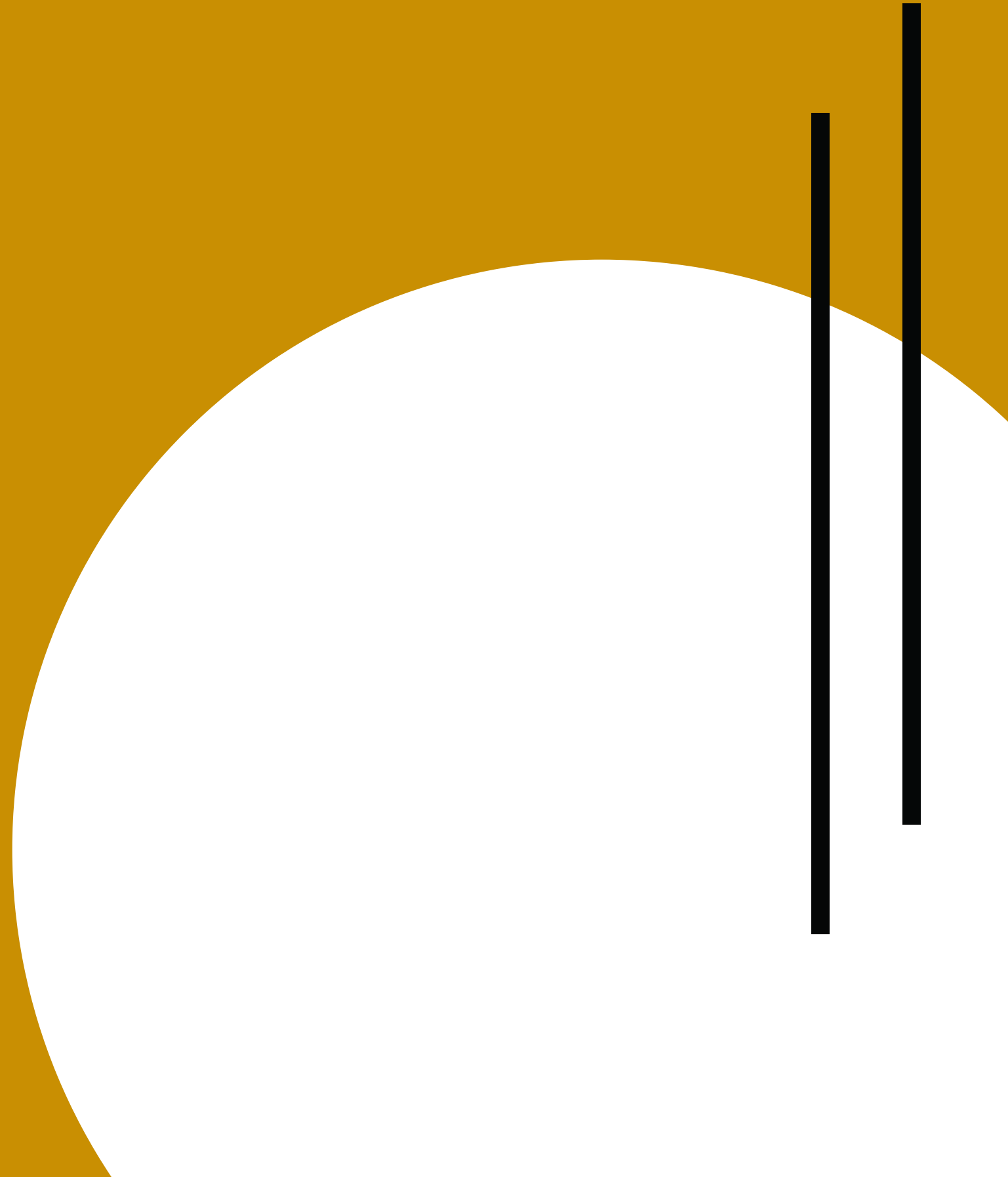
STEP BY STEP





# FINISHING TOUCHES

ADDING THE FINAL PIECES THAT  
MAKE THE PROJECT,  
DISTINCTIVE, AND SPECIAL.





## FINISHING TOUCHES

Whether it's **art or accessories**, the finishing touch in an interior is **key** for tying a room's design together and making the space ready. Our design teams' favorite finishing touches that bring their vision to fruition and **make a space feel complete**, are usually the last piece(s) we add to a space when designing- The accessories.

Anything from books, trays, throw pillows, candles, vases, etc.! This is also **our favorite part**. It's amazing the impact these smaller items have on a design – we never underestimate the power of accessories! We look at the areas in need of filling or added depth, texture, and/or color. There is so much opportunity to be creative and adventurous when it comes to selecting and placing accessories. They really are **a gateway to a playful and layered design!**

## HOW WE DO IT

We consider **what's currently missing in the space**. Is it too neutral? Too bare? Not as interesting as we hoped? Not consistent with other areas in the project? Once we identify what's lacking, we build from there. Our teams get **creative and play around**. Mix and match, place items in unusual ways and see how it feels. When it comes to accessorizing, **nothing has to be permanent**. Our attitude is to try things out until we land on a final collection and arrangement work.

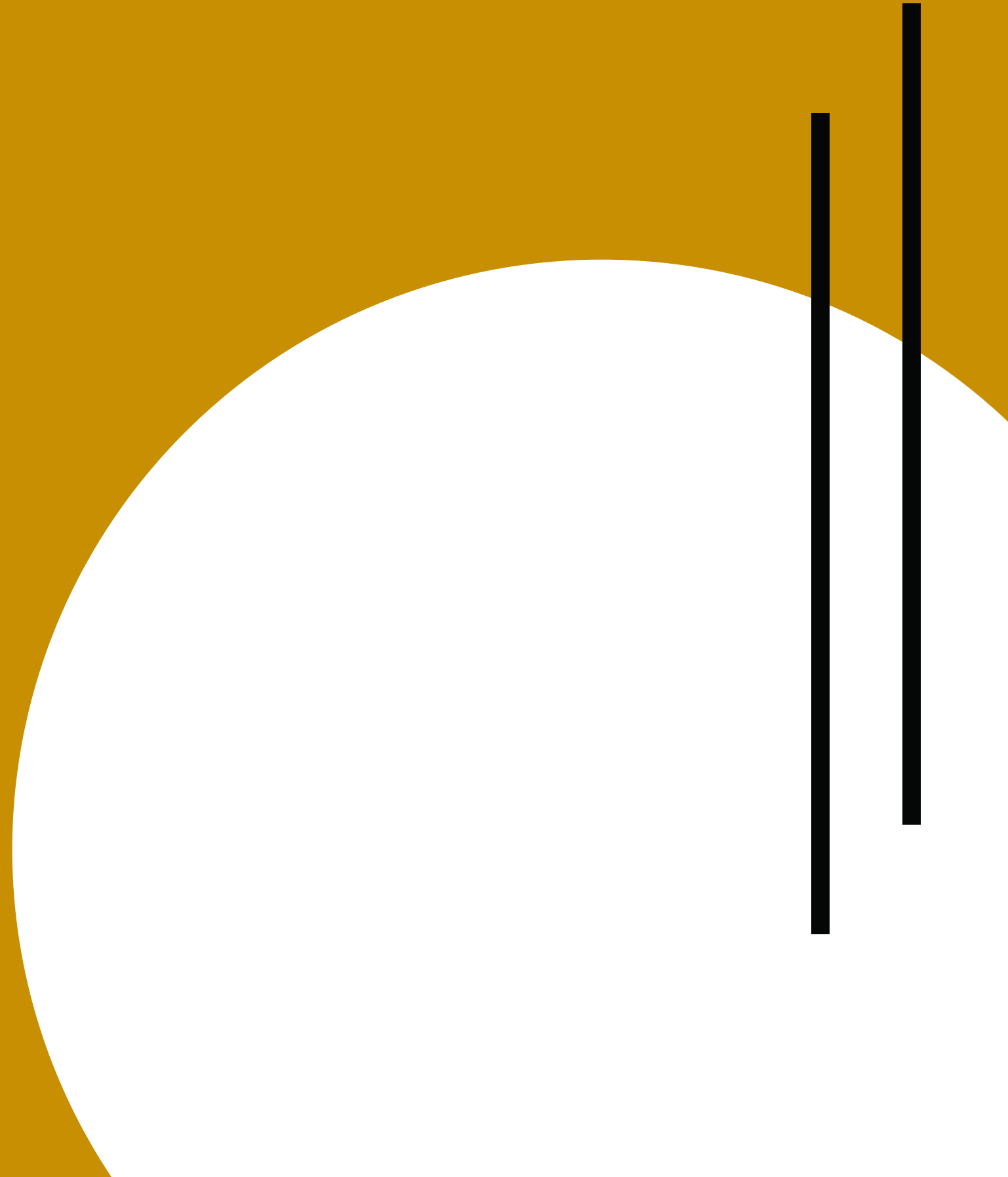
For example, floral arrangements and accessories on bookshelves to fresh flowers and plants have an **unmatched ability** to bring **life and luxury** to any space so we try to use them as much as possible in our projects. In addition, the bookshelves offer the perfect opportunity to bring **sophistication and interest** to a room while also providing a contrasting color scheme against the paint color."

# Art Curation Services

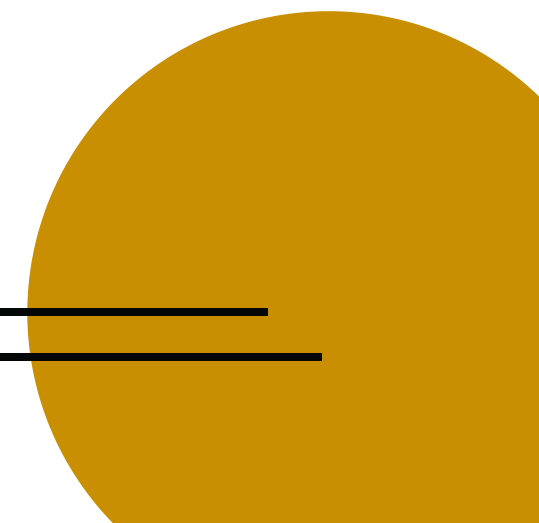
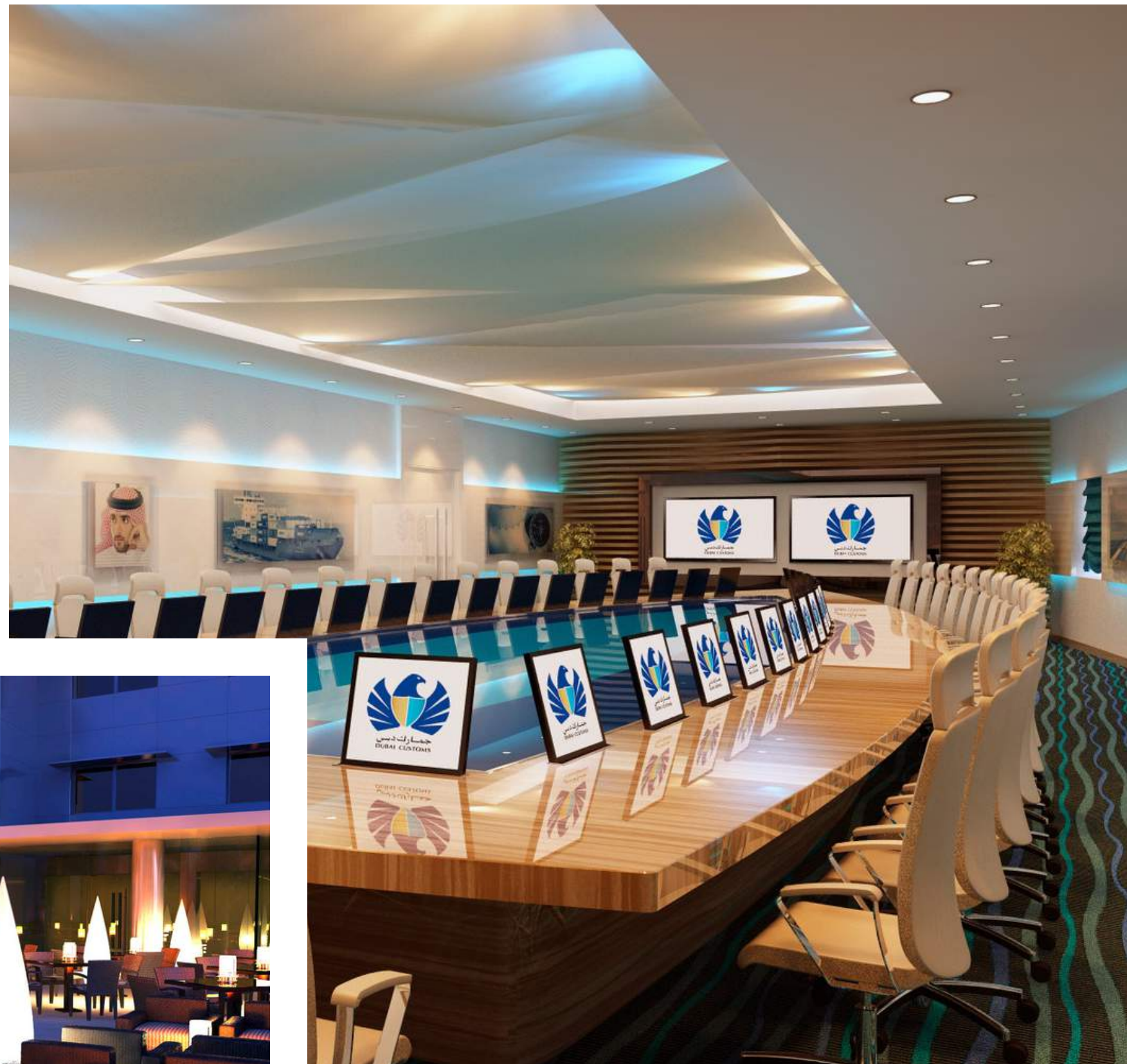
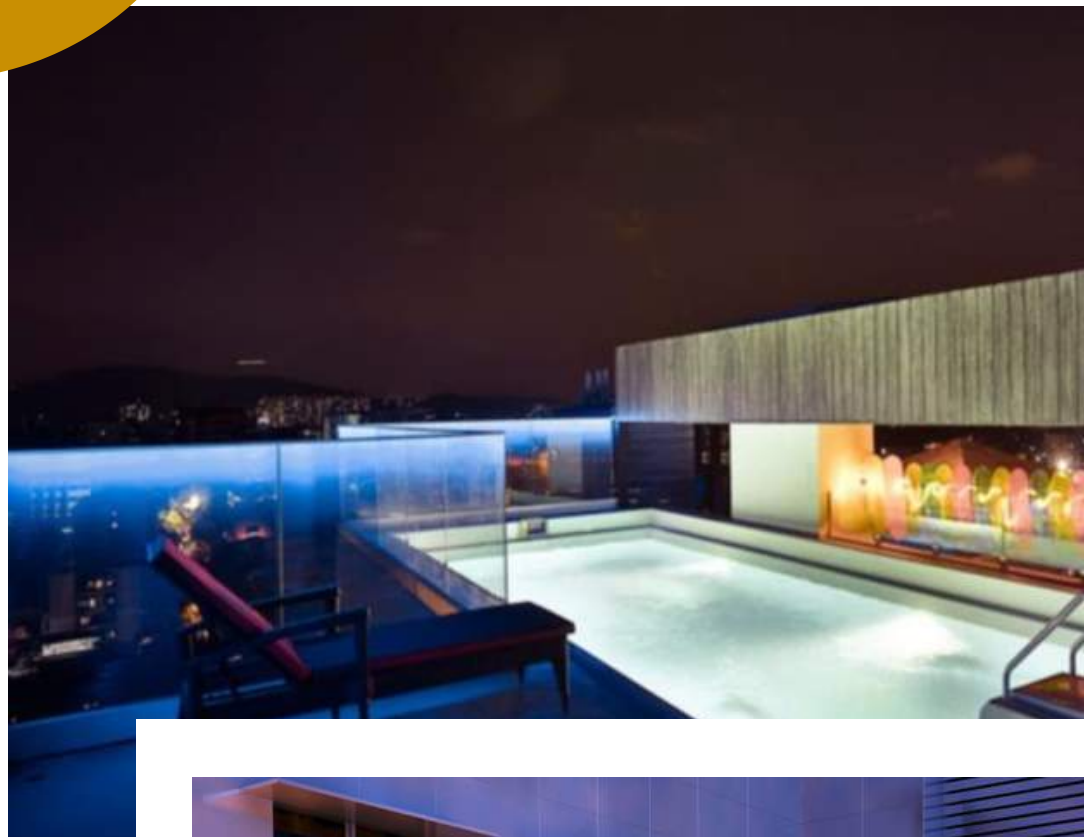


# DESIGN & BUILD

EXCEPTIONAL COORDINATION-  
RAPID DELIVERY

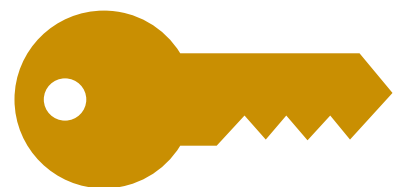






# DESIGN & BUILD Services

## WHAT WE OFFER



TURNKEY  
INTERIOR  
CONTRACTING



SPECIFYING &  
PROCUREMENT



FURNITURE  
MANUFACTURING &  
PROCUREMENT



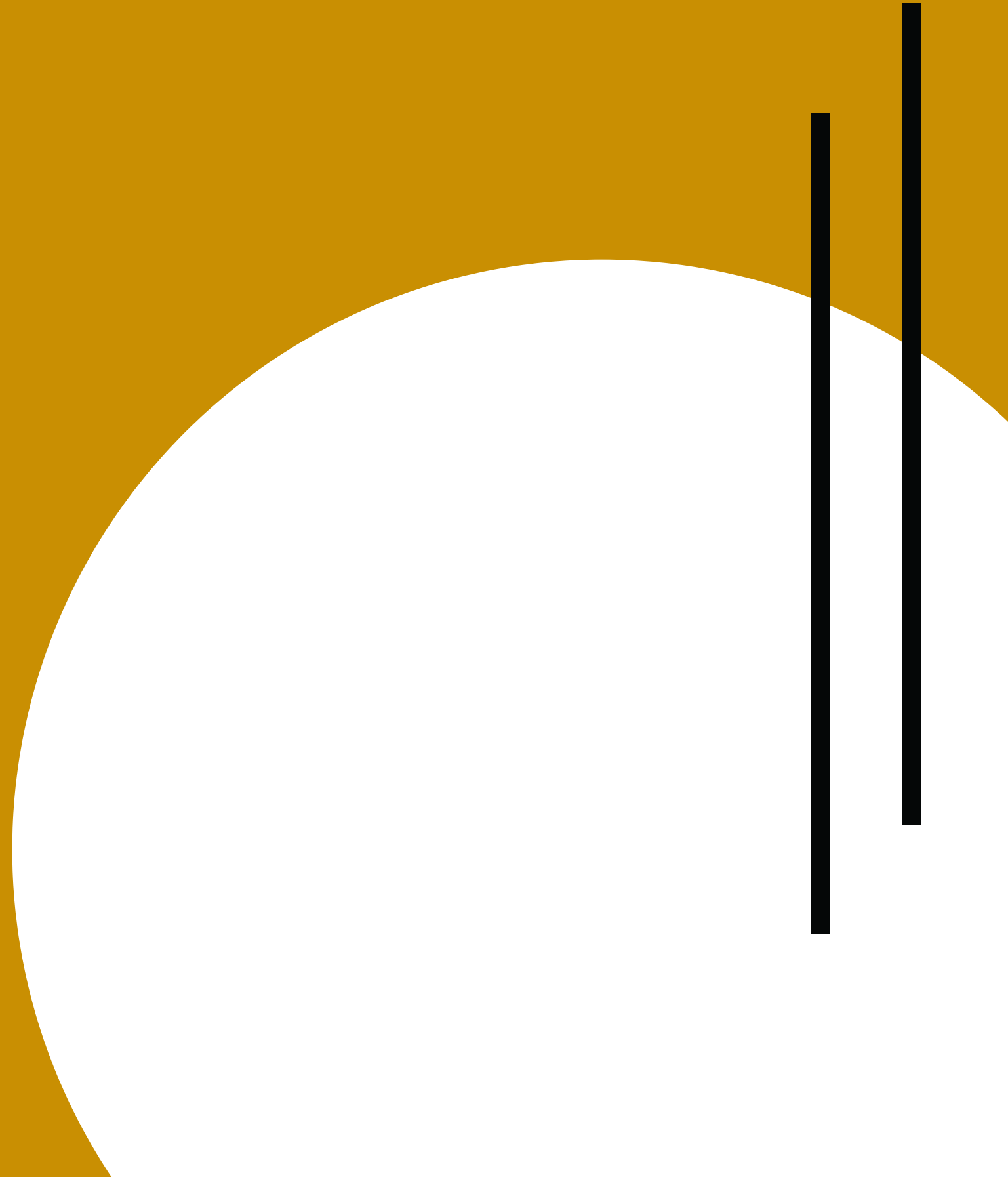
INTERIOR DESIGN





# OUR CLIENTS

“CUSTOMERS MAY FORGET WHAT  
YOU SAID BUT THEY’LL NEVER  
FORGET HOW YOU MADE THEM  
FEEL “~KAY RAMA



ACHOLE DEVELOPERS

AFRICAN & EASTERN

AIR INDIA LTD

AL HARBI GROUP

AL MADAR GROUP- SIRAJ HOTEL APARTMENTS

AL MANZEL HOTELS

AMADOR MICHELIN RESTAURANT

ANITA INTERNATIONAL

ASCOT & CHAPPEL

ATLANTIS PALM JUMERIAH HOTEL  
RESTAURANT FURNISHINGS

BASKIN ROBBINS OUTLET(s)

BOMBAY DYEING

CAIRNCROSS MARTIN

CHELSEA GROUP

CHIK CHIK ANGOLA HOTELS

CORAL HOTELS

DIAGEO

DIVASYREE DEVELOPERS

DUBAI COLLEGE

DUBAI CUSTOMS & PORTS

DUBAI MARINE BEACH RESORT & SPA  
ELECTRONIC BROKING SERVICES (I)

DUBAI INTERNATIONAL HOTEL

FAIRMONT HOTEL

FINANCIAL TECHNOLOGIES

GINI & JONY APPARELS PVT. LTD.

GOLDS GYM

GRAND HYATT DUBAI

GRAND HYATT MUSCAT

HILTON HOTEL CHENNAI

HILTON HOTEL(S)

HILTON- KAMPALA

HOLIDAY INN - SURAT

HOTEL TRANSIT

INDAGE RESTAURANTS & LEISURE

INTERCONTINENTAL HOTEL GROUP

JASCO INTERNATIONAL

JET AIRWAYS (I)

JUMEIRAH ENGLISH SPEAKING SCHOOL  
KAYSONS SAREES

LABEL 24 FASHION STORE(s)

LAKESHORE INDIA MGMT

L & T REALTY

LONDON CROWN GROUP OF HOTELS

LOTUS DOWNTOWN HOTELS

LOTUS GROUP OF HOTELS

MAJESTIC INTERNATIONAL HOTEL

MAK TELEVISION NETWORK

MAX AEROSPACE & AVIATION PVT. LTD

MILLENIUM HOTELS

NIRMAL LIFESTYLES

OBEROI REALTY

OMAN AIR

PATEL ENGINEERING

PATEL REALTY (I) LTD.

PROVOGUE (I) LTD.

RAFFLES HOTEL DUBAI

RAMEE GROUP

RITZ CARLTON DUBAI

RUSTOMJEE

RODA HOTELS

SAHARA AIRLINES

SAMSUNG C/T

SCHOOL OF RESEARCH SCIENCE

SHADOW FILMS

SHEETAL ETHNIC STORE

SREE NAMAN GROUP

ST. MORITZ CAFE

SUN N SAND

SWATCH GROUP

T-24 RESIDENCE

THE AJMAN PALACE HOTEL

TIA FASHIONS RETAIL STORES(s)

TOWERS ROTANA HOTEL

UNION PROPERTIES

WYM

XCLUSIVE HOTELS





## CALL US

+91 7977736962



## EMAIL US

info@rendesignbuild.com



## SEARCH US UP

www.rendesignbuild.com



## OFFICE

M1, Opposite Hotel Transit  
(Near Domestic Airport)  
Vile Parle (E) Mumbai-  
400099

# CONTACT US

“ALWAYS DELIVER MORE THAN  
EXPECTED.”~  
LARRY PAGE

